

NAVAYUGA EXPORTS LTD

CORPORATE PROFILE



Excellence through Quality



The Navayuga Exports, a company with a vision to "Excel through quality". India is a country of rich natural resources and in order to bring the best of what the country has to offer, Navayuga exports Ltd. is making an effort to offer the bounty of the lands and seas of India.

Navayuga exports limited., established in1993, is an associate of Navayuga Group, having diversified activities like marine products and granite export.

Be it shrimp farming, quarrying of granite, mining for minerals, the Navayuga group is delivering quality products and services that meet international standards.

These diversified activities are raising the credentials of Navayuga Exports on the global front. The Navayuga group aims at total customer satisfaction through value addition of its products and services, maintaining required standards, making Navayuga Exports Ltd., a name to reckon with.

The major market of Navayuga Exports - Marine Division are in Japan, USA, Middle East and south-east Asia.

ABOUT NEL

Navayuga exports limited., established in 1993, is an associate of Navayuga Group, having diversified activities like marine products and granite export.

Navayuga's shrimp is blooming in the east coast of India, mainly in the states of Andhrapradesh and Orissa, emerging as a major source of seafood for the International markets. Exploiting the rich resources of the brackish water, Navayuga Exports has taken up farming, processing and exporting of high quality shrimps from over 2000 hectares of land through ownership /lease /franchise.

The main variety of Shrimp exported from Navayuga are Tiger Shrimp (*penaeus Monodon*), White Shrimp (*Penaeus indicus*), Brown Shrimp (*Metapenaeus monocerous*).

No wonder Navayuga Exports achieved a turnover of RS.600 million for shrimp exports in a very short span under the brand name "**Navayu**" - A name associated with relish by food connoisseurs the world over.

Navayuga quarries exports large granite blocks which are in great demand. Navayuga exports mining operations and quarrying techniques are optimized to produce an average of 100 cum. of granite every month.

The company can supply a variety of grades of various hues and colors. The company has captive quarries of "Bengal Blue", "Premier White", "Waltair Blue", "Steel Grey" and "Regal Blue". These products have been well received

all over the world. Apart from supplying stone from its own quarries, Navayuga can supply any desired variety & quantity of granites from other quarries as well.

KEY PEOPLE:

Mr. G Pawan Kumar – Director

- Mr. Pawan has done MBA from UK with a civil Engineering background. He is looking after complete operation of NEL from past 4 years. He has very good understanding of the Global Market and the current trends. He is Fast Analyzer and quick decision maker which enables him to have very good rapport with buyers and sellers all over the Globe.

Mr S.K.Sahoo - Finance manager

Aged around 35 years having 10 years of in-depth experience in Finance, Banking and Accounting.

Mr. Siladitya Dey - Purchase Manager

Aged about 45 years with a vast experience of 25 years in the sea food Industry. Well know as Dey babu. Good knowledge about quality of the raw material and its subsequent value addition, packing and transportation methods

Mr Praveen Kolar - Manager (Technical)

Aged 30 years. M.Tech in Aquaculture from I.I.T Kharagpur. Experience of 5 years in field of Aquaculture. Excellent knowledge of prawn culture and is

managing company's culture fields in Orissa. Handles procurement and Culture activity of Black Tiger Culture shrimps

Mr. Ravi Kanth - Factory Manger

Aged about 32 years - looks after work sheduling, Transport mangement from various parts of the country, meterial mangement, stocks, preservation etc

Mr. Vikram Mehta - Executive

Aged about 25 - the youngest and dynamic chap in NEL. He worked for NEL Granites for about 2 years in the marketing. He has a sound knowledge about the market and the clients. He is now serving at NEL Marines in Bhuvaneshwar as a Marketing Executive. He also keeps the records of the day to day activities of the Production. He also looks after Human resources activities.

Mr Veerbhadra Rao - Manager

Aged about 55 years serving NEL from a long time with a good exposure towards Imports and Exports, shipment, Cargo Management. He looks after Vizag office operation of NEL Marines, and Cargo management to various parts of the world. He is a bit serious but very sensor person with a well balanced mind.

Mr P Srihari - Finance Manager

Aged about 30 years maintaining the finance part at the Vizag operations

CLIENTS:

The key to today's emerging business arena is to be present, not just present but Globally Present.

Navayuga Exports Ltd.. as an environment friendly company is

dedicated to providing quality services on time, each time. We at Navayuga Exports give outmost importance to customer satisfaction; We cover a range of clients right from Japan to US, Australia and UAE.

INFRASTRUCTURE:

Navayuga Marine Division:

Navayuga Marines has two processing plants at Visakhapatanam and Bhubaneshwar designed on International Standards and are **HACCP compliant** and **FDA Approved 'A' list packer**.

The plants are located close to farms with 20,000 Sq feet roof area, 6.4 Acres total ground area, Residential colony for workers, which ensure the processing of the shrimp within 240 minutes of harvesting. The quick processing of shrimp allows better quality and retains freshness. The combined capacity of our plants can handle 40 metric tones of shrimp and fish daily. Elaborate quality control procedure, including rigorous grading and weightment norms are meticulously followed for each slab and carton.

High Lights

- **HACCP** Compliance at our Processing facility
- **FDA** Approved 'A' list packer
- Automated Grading and filth washing Machine
- Block Ice manufacturing capacity 35 tons per day
- Storage Capacity 650 MT
- Sophisticated Lab Facilities

Vehicle Fleet

We have around 20 Nos of Different kinds of Transport Vehicles for Incoming and outgoing Items, which ranges from 3 tons Vans to 15 tons of fully Insulated Containers.

The transportation facility includes insulated carriers that carry the product to ensure the freshness of product.

Combined both Processing plants

Capacity: 40 tons per day

- Shrimp - 22.5 tons per day
- Fish - 17.5 tons per day

Freezing Capacity

The excellently refrigerated storage condition is strictly controlled under minus 18 degree centigrade.

- Plate freezers 9 Nos
- Blast Freezers 2 Nos

Sophisticated Lab Facilities

Lab equipped with modern testing facilities to carry out various tests like Organo-leptic test, Vibrio cholera test, Bacteriological test, Salmonella test and Filth test with E.I.A approved lab technologists.

Efficient Staff

We have highly trained and very active work Force
Over 300 staff at Bhuvaneshwer factory
Over 75 staff at Vizag factory

Our Export

The major market of Navayuga Exports - Marine Division are in Japan, USA, Middle East and south-east Asia.

NEL GRANIRES DIVISION:

We have Mines at Srikakulam area in Andhra Pradesh

Quarrying Technique

We use Italian Diamond wire rope saw for cutting blocks at our quarry

Capacity: Production capacity of 150 cu.m per month

Machinery: Well Equipped
Sophisticated Machinery

People: Over 200 Staff all together

We export

- 85% to Europe
- 15% to Canada & USA

SERVICES:

Navayuga Exports Limited is providing since 1993 having diversified services in Marine, Granite and Agri Products

Marine Exports

NEL is a Major Expoter in INDIA for Shrimp and Fish Exports.

Navayuga Exports is exporting wide verity of Shrimps all across the world with different kind of value additions as per the clients requirements.

Shrimp farming is booming in the East Coast of India, mainly in the states of Andhra pradesh and Orissa, emerging as a major source of sea food for the international markets. Exploiting the rich resources of the brackish waters, Navayuga Exports has taken up farming, processing and exporting of high quality shrimps with over 100 hectares in Andhra Pradesh and Orissa through ownership / lease / franchise.

Navayuga Exports has processing plants designed on international standards at

Vishakapatnam, Bhubaneshwar and Balasore offer ideal locational advantages.

No wonder Navayuga Exports achieved a turnover of Rs. 400 million for Shrimp exports in a very short span under the brand name

"NAVAYU" and "SHOCHIKU"- A name associated with relish by food connoisseurs, the world over.

Navayuga Exports also exports the main varieties of fish like Ribbon Fish, Sear Fish, Cuttle Fish, Silver Pomfret and Black Pomfret.

NAVAYUGA SHRIMP



Harvested from the famous brackish waters of the East Coast of India, "Navayu" Shrimp is a renowned product of Navayuga exports.

Shrimp farming is booming in the East Coast of India, mainly in the states of Andhra Pradesh and Orissa, emerging as a major source of sea food for the international markets. Exploiting the rich resources of the brackish waters, Navayuga Exports has taken up farming, processing and exporting of high quality shrimps with over 100 hectares in Andhra Pradesh and Orissa through ownership / lease / franchise.

The main varieties of shrimp exported by Navayuga are :

1. BLACK TIGER (Penaeus monodon)

Cultured in brackish waters on East Coast of India.

- Available from June to February
- Sizes Packed: 6/8 to 71/90
- Packing style: 6 X 1.8Kg, Pan Frozen
- Value Additions: PD, PDTO, Cut PD, and PTO

Major Destinations: Japan, USA, S.E.Asia, & Australia.

2. SCAMPI (Macrobrachium rosenbergii)

- Fresh Water Culture on East Coast of India
- Available from June to January

3. SEA TIGER (Penaeus monodon)

- Natural Sea Variety
- Available from May to March
- Sizes Packed: U/5 to 41/50
- Packing style: 10 X 2Kg, Carton Frozen
- Major Destinations: Japan & S.E. Asia

4. FLOWER TIGER (Penaeus semisulcatus)

- Natural Sea Variety
- Available from July to Dec
- Sizes Packed: 6/8 to 61/70
- Packing style: 10 X 2Kg, Carton Frozen
- Major Destinations: Japan & S.E. Asia

5. SEA WHITE (Penaeus indicus)

- Natural Sea Variety
- Available from June to Feb
- Sizes Packed: 8/12 to 71/90
- Packing style: 10 X 2Kg, Carton Frozen
- Major Destinations: Japan & S.E. Asia

- Value Additions: PDPV, PTO, and BUTTERFLY
- Major Destinations: Japan, USA, S.E. Asia and Middle East.

6. CULTURE WHITE (Penaeus indicus)

- Natural Culture in Chilka lake (Asia's largest salt-water lake) on East Coast of India.
- Available from February to October
- Sizes Packed: 21/25 to 91/110
- Packing style: 10 X 2Kg, Carton Frozen
- Value Additions: PDPV, PDTO, PTO, and BUTTERFLY
- Major Destinations: Japan, USA, & S.E. Asia

Navayuga Exports has processing plants designed on international standards at Vishakapatnam, Bhubaneshwar and Balasore offer ideal locational advantages.

The excellent refrigerated storage and transportation facility along with hygienic processing conditions ensure freshness and help to retain the delicate flavor of shrimp. Elaborate quality control procedures, including rigorous grading and weightment norms are meticulously followed for each slab and carton.

No wonder Navayuga Exports achieved a turnover of Rs. 400 million for Shrimp exports in a very short span under the brand name "NAVAYU" and "SOCHIKU"- A name associated with relish by food connoisseurs, the world over.

7. PINK (Metapenaeus dobsoni)

- Natural Sea Variety
- Available from May to Mar
- Sizes Packed: 13/15 to 91/110
- Packing style: 10 X 2Kg, Carton Frozen / 6 X 1.8Kg, Pan Frozen
- Value Additions: PDPV, PTO, and BUTTERFLY
- Major Destinations: Japan, USA, S.E. Asia and Middle East.

Value Additions

At NEL we do wide verity of Value additions as per the customer Requirements. Some of them are

- 1. PDPV - (Peeled and pulled Vain)
- 2. PD - (Peeled and Divined)
- 3. PDTO - (Peeled Divined Tail On)
- 4. Cut PD - (Cut Peeled and Divined)
- 5. PTO - (Peeled Tail On)
- 6. BFLY - (Butterfly)

8. BROWN (Metapenaeus monoceros)

- Natural Sea Variety
- Available from May to Mar
- Sizes Packed: 13/15 to 91/110
- Packing style: 10 X 2Kg, Carton Frozen

FISH



Navayuga Exports Some of the main varieties of fish like Ribbon Fish, Sear Fish, Cuttle Fish, Silver Pomfret and Black Pomfret.

1. SILVER POMFRET (*Pampus argentus*)

Available from: Sep to Feb
Sizes packed: 100/200 to 700up
Packing style: IQF/IWP, 20kg
Major Destinations:
China, S.E.Asia, Middle East, USA, and Canada

2. BLACK POMFRET (*Parastromateus niger*)

Available from: Aug to Jan
Sizes packed: 300/500 to 1000up
Packing style: IQF / IWP, 20 kg
Major Destinations:
S.E.Asia, Middle East, USA, and Canada

3. CUTTLE FISH (*Sepia spp.*)

Available from: Aug to Feb
Sizes packed: U/50 TO 700/1000
Packing style: 4kg X 5 slabs
Major Destinations:
China, S.E.Asia, and USA

4. SOLE FISH (*Cynoglossus macrolepidotus*) Small scales

Available from: July to Nov
Sizes packed: 100/200 to 300/400
Packing style: IQF / IWP, 10 kg
Major Destinations:
China, S.E.Asia, and Middle East.

5. SOLE FISH (*Paraplagusia bilineata*) Large scales

Available from: Sep to Feb
Sizes packed: 100/200 to 300/400
Packing style: IQF / IWP, 10 kg
Major Destinations:
China, S.E.Asia, and Middle East.

6. SEER FISH (*Scomberomorus commerson*)

Available from: Oct to Jan
Sizes packed: 2kg/6kg to 12kgup
Packing style: IQF / IWP
Major Destinations:
USA, Canada, S.E.Asia, and China

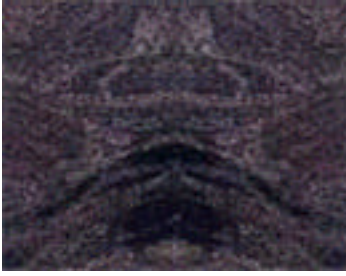
7. RIBBON FISH (*Lepturacanthus savala*) small headed

Available from: Jul to May
Sizes packed: 100/200 to 400up
Packing style: 10 Kg pack, Blast Frozen
Major Destinations:
China, and S.E.Asia.

8. RIBBON FISH (*Trichirus lepturus*) large headed

Available from: July to May
Sizes packed: 100/200 to 400up
Packing style: 10 Kg pack, Blast Frozen
Major Destinations:
China, and S.E.Asia.

NEL GRANITES



Excavated from the famous Srikakulam Granite Quarries, the popular "Bengal Blue" and "Premier white" varieties of granite are quarried by Navayuga Exports.

In the deccan plateau of India, a part of Andhra Pradesh has a natural geographical heritage which has some unique granite rock formations. These formations commonly refer to as the deccan shield is considered by geologists to be 2.500 million years old.

Navayuga quarries exports large granite blocks which are in great demand. Navayuga exports mining operations and quarrying techniques are optimized to produce an average of 100 cum. of granite every month.

The company can supply a variety of grades of various hues and colors. The company has captive quarries of "Bengal Blue", "Premier White", "Waltair Blue", "Steel Grey" and "Regal Blue". These products have been well received all over the world. Apart from supplying stone from its own quarries, Navayuga can supply any desired variety & quantity of granites from other quarries as well.

GRANITES AVAILABLE WITH US

- Vizag blue - Dark / Medium / Light
- Regal Blue - Dark / Medium
- Premium White/Himalayan Blue - Wavy / Straight line
- Orissa Blue
- Multi Color Red
- Paradiso Classico
- Romantica
- Ilkal Red
- Cats Eye
- Black Galaxy
- Khammam Black
- Chamraj Nagar Black
- Forest Green
- Kuppam Green
- Tan Brown
- Sivakasi Yellow
- Tiger Skin
- Kashmir White

AGRI DIVISION

Aromatic Oils (Natural Essential Oils) Used for

- Perfume Industries
- Body Lotions
- Baby Oils

Production cum oil Extraction and filtration facility types

- Citronella Oil
- Lemon Grass Oil
- Lavender Oil
- Palma Rosa Oil

CONTACT US:

**OPERATIONAL /ADMINISTRATION
OFFICES:**

Navayuga Exports Limited

Plot No: 15, Sahid Nagar,
Bhubaneswar - 751 007
Tel: +91-674-522413 / 14 / 15
Fax: +91-674-519902
Email: seafood@navayuga.com

Navayuga Exports Limited

48-9-17, Dwarakanagar,
Visakhapatnam - 530 016
Tel: +91-891-501784 / 668789
Fax: +91-891-748085

CORPORATE OFFICE

Navayuga Exports Limited

VI-1, Dhruvtara Apartments,
Somajiguda, Hyderabad - 500 082
Tel: +91-40-3310780 / 3301098
Fax: +91-40-3314080